


**This MotoCAP safety rating applies to:**

**Brand:** Oxford  
**Model:** Super Leggings  
**Type:** Pants - Textile  
**Date purchased:** 5 November 2018  
**Sizes tested:** 16  
**Gender:** F  
**Style:** All Purpose  
**Test code:** P18T12

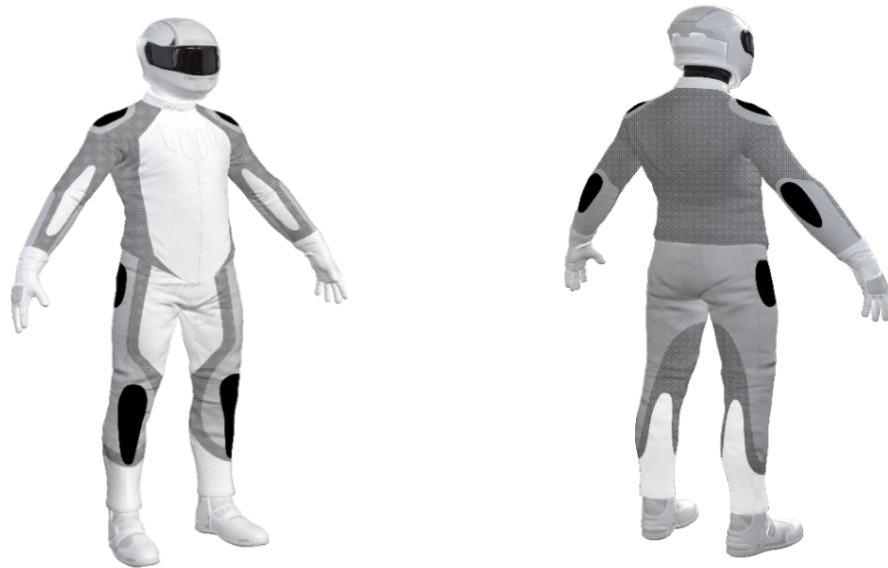
**Test Results Summary:**

	Rating	Score
MotoCAP Protection Rating	★	11.1
Abrasion	1/10	1.12
Burst	5/10	520
Impact	1/10	0.9
MotoCAP Comfort Rating	★★★	0.507
Moisture Vapour Resistance		24.1
Thermal Resistance		0.204
Water resistance	N/A	N/A

This garment is fitted with impact protectors in the knees and pockets were provided for the fitting of aftermarket impact protectors in the hips. The fabric has high vapour permeability which would allow airflow through it to aid cooling in hot weather.

**Jacket and Pants - Crash Impact Risk Zones**

This diagram is a pictorial representation of the crash impact risk Zones.


**Zone 1**


High risk of abrasion  
High risk of impact

**Zone 2**


High risk of abrasion

**Zone 3**


Medium risk of abrasion

**Zone 4**


Low risk of abrasion

## Abrasion Resistance

The garment was tested for abrasion resistance in accordance with MotoCAP test protocols. The table below shows the test results for time to abrade through all layers of the materials. Calculated for each sample by Zone, type and area coverage of each material as a proportion of that Zone.

### Details of materials used in garment:

Material A: Polyester/elastane woven stretch fabric shell with Kevlar/Elastane woven stretch inner liner  
 Material B: Polyester/elastane woven stretch fabric shell

Zone	Coverage (%)	Abrasion time for each test (seconds)						Average (seconds)	
		1	2	3	4	5	6		
<b>Zone 1 and 2 areas (High abrasion risk)</b>									
Material A	100%	1.24	0.91	1.15	1.10	1.48	1.00	1.15	<b>P</b>
<b>Zone 3 area (Medium abrasion risk)</b>									
Material A	100%	1.24	0.91	1.15	1.10	1.48	1.00	1.15	<b>M</b>
<b>Zone 4 area (Low abrasion risk)</b>									
Material A	50%	1.24	0.91	1.15	1.10	1.48	1.00	1.15	<b>A</b>
Material B	50%	0.85	0.75	0.85	0.86	0.82	0.88	0.83	<b>M</b>

The diagram below is a visual indication of the likely abrasion performance of the materials in each zone calculated from the data in the table above. The colour coding is based on the worst performing material in each zone.



Determining Criteria		Good	Acceptable	Marginal	Poor
High abrasion risk	Zone 1/2:	> 5.6	3.0 - 5.6	1.3 - 2.9	< 1.3
Medium abrasion risk	Zone 3:	> 2.5	1.8 - 2.5	0.8 - 1.7	< 0.8
Low abrasion risk	Zone 4:	> 1.5	1.0 - 1.5	0.4 - 0.9	< 0.4

### Burst Strength

The garment's burst strength was tested in accordance with MotoCAP test protocols. The table below shows the burst pressure in kilopascals (kPa) for each sample tested by Zone and the average result for each zone.

Burst pressure (kPa)

Area	1	2	3	4	5	Average	
Zones 1 & 2	932	623	664	631	590	688	M
Zone EZ	447	338	338	371	341	367	P
Zones 3 & 4	579	605	564	343	355	489	P

The diagram below illustrates the burst strength results in terms of the likely performance of the garment in an impact and is a pictorial representation of the data from the table above.



### Impact Protection

The garment was tested for impact protection and coverage in accordance with MotoCAP test protocols. The table below shows the test results for each strike on each impact protector in kilonewton (kN) and their area of coverage as a proportion (%) of the Zone.

Impact protector type	Knee		Hip	
Average force (kN)	15.2	A	0.0	P
Maximum force (kN)	24.0	A	0.0	P
Coverage of zone 1 area	100%		0%	
Coverage of zone after displacement	100%		0%	

### Individual test results

Impact force (kN)	Knee			Hip	No impact protector present		
	A	B	C		A	B	C
Impact Protector 1	17.2	12.6	18.1				
Impact Protector 2	9.3	10.8	18.9				
Impact Protector 3	10.7	15.1	24.0				

The diagram below is a visual indication of the likely performance of each impact protector calculated from the data in the table above. The colour coding is based on the worst performing score for average or maximum force for each impact zone.



Determining Criteria	(kN)	Good	Acceptable	Marginal	Poor*
		< 15	15 - 24	25 - 30	> 30
Impact force	(kN)	< 15	15 - 24	25 - 30	> 30

\* Poor may also indicate that no impact protector, or impact protector pocket is present in the garment

### Thermal comfort

The garment was tested for thermal comfort following the MotoCAP test protocols. The table below shows the moisture vapour resistance and the thermal resistance values obtained.

	1	2	Average
Moisture Vapour Resistance - $R_{et}$ ( $kPam^2/W$ )	24.0	24.1	24.1
	1	2	Average
Thermal Resistance - $R_{ct}$ ( $Km^2/W$ )	0.194	0.213	0.204

### Water spray and rain resistance

This garment has not been advertised as water resistant so has not been tested for water spray and rain resistance.