


This MotoCAP safety rating applies to:

Brand: Spidi
Model: Netstream
Type: Jacket - Textile
Date purchased: 29 November 2018
Sizes tested: XL
Gender: M
Style: All Purpose
Test code: J18T13

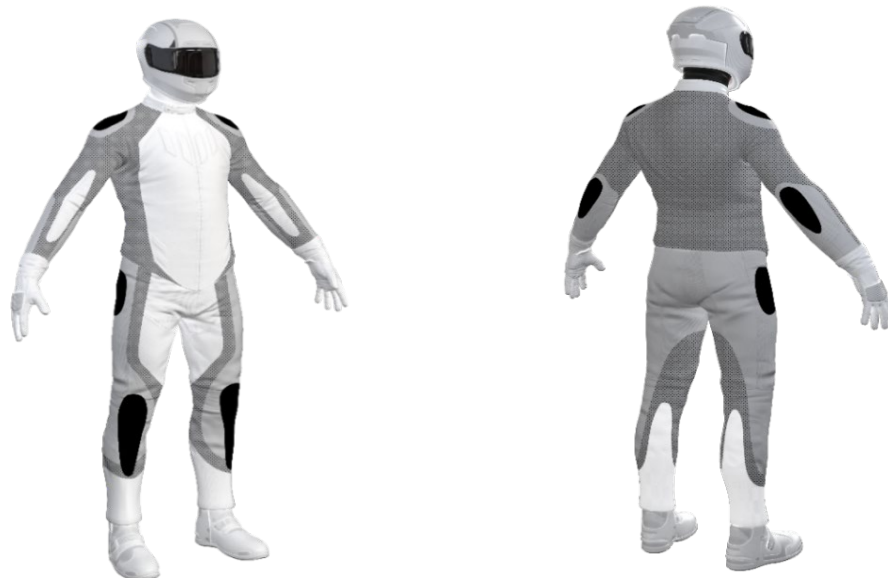
Test Results Summary:


	Rating	Score
MotoCAP Protection Rating	★	18.1
Abrasion	1/10	0.30
Burst	7/10	737
Impact	4/10	30.9
MotoCAP Comfort Rating	★★★★	0.536
Moisture Vapour Resistance		24.4
Thermal Resistance		0.218
Water resistance	N/A	N/A


This garment is fitted with impact protectors for the elbows and shoulders, pockets are provided at the back for aftermarket impact protectors. Mesh panels are located in the arms, chest and central back areas to allow airflow cooling in hot weather.


Jacket and Pants - Crash Impact Risk Zones


This diagram is a pictorial representation of the crash impact risk Zones.



Zone 1

 High risk of abrasion
 High risk of impact

Zone 2

 High risk of abrasion

Zone 3

 Medium risk of abrasion

Zone 4

 Low risk of abrasion

Abrasion Resistance

The garment was tested for abrasion resistance in accordance with MotoCAP test protocols. The table below shows the test results for time to abrade through all layers of the materials. Calculated for each sample by Zone, type and area coverage of each material as a proportion of that Zone.

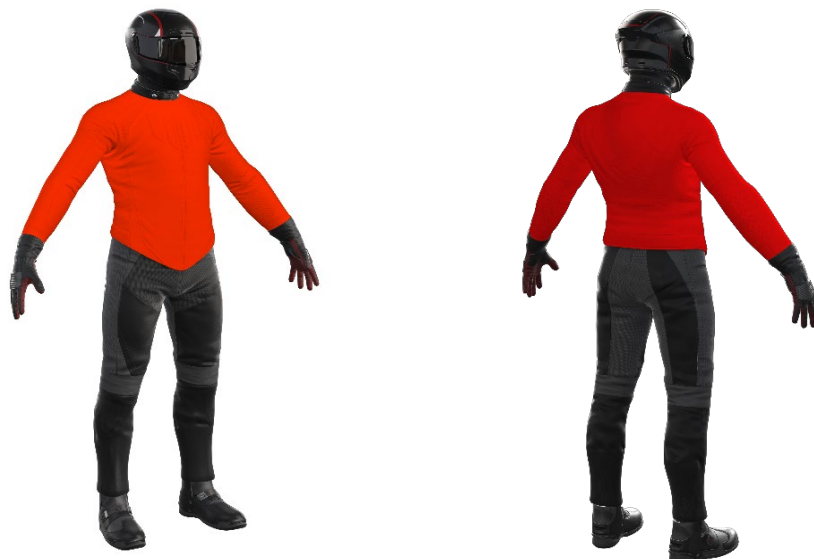
Details of materials used in garment:

Material A: Mesh fabric shell and mesh inner liner
 Material B: Woven fabric shell and mesh inner liner

Zone	Coverage (%)	Abrasion time for each test (seconds)						Average (seconds)	
		1	2	3	4	5	6		
Zone 1 and 2 areas (High abrasion risk)									
Material A	40%	0.42	0.41	0.43	0.36	0.42	0.43	0.41	P
Material B	60%	0.28	0.29	0.32	0.28	0.32	0.35	0.31	P
Zone 3 area (Medium abrasion risk)									
Material A	85%	0.42	0.41	0.43	0.36	0.42	0.43	0.41	P
Material B	15%	0.28	0.29	0.32	0.28	0.32	0.35	0.31	P
Zone 4 area (Low abrasion risk)									
Material A	95%	0.42	0.41	0.43	0.36	0.42	0.43	0.41	M
Material B	5%	0.28	0.29	0.32	0.28	0.32	0.35	0.31	P

Abrasion times are capped at a maximum of 10.00s.

The diagram below is a visual indication of the likely abrasion performance of the materials in each zone calculated from the data in the table above. The colour coding is based on the worst performing material in each zone.



Determining Criteria		Good	Acceptable	Marginal	Poor
High abrasion risk	Zone 1/2:	> 5.6	3.0 - 5.6	1.3 - 2.9	< 1.3
Medium abrasion risk	Zone 3:	> 2.5	1.8 - 2.5	0.8 - 1.7	< 0.8
Low abrasion risk	Zone 4:	> 1.5	1.0 - 1.5	0.4 - 0.9	< 0.4

Burst Strength

The garment's burst strength was tested in accordance with MotoCAP test protocols. The table below shows the burst pressure in kilopascals (kPa) for each sample tested by Zone and the average result for each zone.

Burst pressure (kPa)

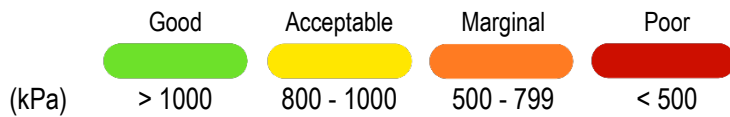
Area	1	2	3	4	5	Average	
Zones 1 & 2	846	956	626	801	828	812	A
Zone EZ	437	549	673	787	1053	700	M
Zones 3 & 4	401	735	861	535	788	664	M

The diagram below illustrates the burst strength results in terms of the likely performance of the garment in an impact and is a pictorial representation of the data from the table above.



Determining Criteria

Burst strength



Impact Protection

The garment was tested for impact protection and coverage in accordance with MotoCAP test protocols. The table below shows the test results for each strike on each impact protector in kilonewtons (kN) and their area of coverage as a proportion (%) of the Zone.

Impact protector type	Elbow		Shoulder	
Average force (kN)	22.7	A	22.8	A
Maximum force (kN)	25.7	M	27.1	M
Coverage of zone 1 area	95%		95%	
Coverage of zone after displacement	80%		90%	

Individual test results

Impact force (kN)	Elbow			Shoulder		
	A	B	C	A	B	C
Impact Protector 1	19.9	21.6	25.3	20.1	20.0	26.1
Impact Protector 2	19.5	22.3	22.1	19.0	24.2	27.1
Impact Protector 3	23.6	24.2	25.7	20.5	22.3	25.7

The diagram below is a visual indication of the likely performance of each impact protector calculated from the data in the table above. The colour coding is based on the worst performing score for average or maximum force for each impact zone.



Determining Criteria	Good	Acceptable	Marginal	Poor*
Impact force (kN)	< 15	15 - 24	25 - 30	> 30

* Poor may also indicate that no impact protector, or impact protector pocket is present in the garment

Areas shaded black are not considered in the impact protection ratings.

Thermal comfort

The garment was tested for thermal comfort following the MotoCAP test protocols. The table below shows the moisture vapour resistance and the thermal resistance values obtained.

	1	2	Average
Moisture Vapour Resistance - R_{et} (kPam ² /W)	25.1	23.7	24.4
	1	2	Average
Thermal Resistance - R_{ct} (Km ² /W)	0.210	0.226	0.218

Water spray and rain resistance

This garment has not been advertised as water resistant so has not been tested for water spray and rain resistance.