



This MotoCAP safety rating applies to:

Brand: MotoDry
Model: Ultra Vent
Type: Jacket - Textile
Date purchased: 11 February 2019
Sizes tested: XL and L
Gender: M
Style: All Purpose
Test code: J19T05

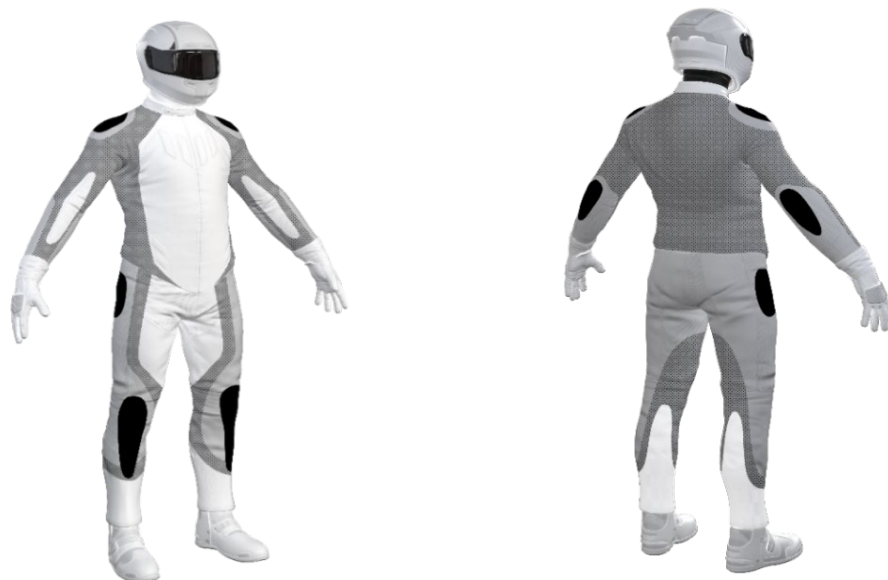
Test Results Summary:


	Rating	Score
MotoCAP Protection Rating	★★	33.6
Abrasion	1/10	1.20
Burst	10/10	1473
Impact	6/10	42.9
MotoCAP Comfort Rating	★★	0.328
Moisture Vapour Resistance		30.5
Thermal Resistance		0.167
Water resistance	N/A	N/A


This garment is fitted with impact protectors for the elbows and shoulders, pockets are provided at the back for aftermarket impact protectors. Mesh panels are located in the arms, chest and central back areas to allow airflow cooling in hot weather.


Jacket and Pants - Crash Impact Risk Zones


This diagram is a pictorial representation of the crash impact risk Zones.



Zone 1

 High risk of abrasion
 High risk of impact

Zone 2

 High risk of abrasion

Zone 3

 Medium risk of abrasion

Zone 4

 Low risk of abrasion

Abrasion Resistance

The garment was tested for abrasion resistance in accordance with MotoCAP test protocols. The table below shows the test results for time to abrade through all layers of the materials. Calculated for each sample by Zone, type and area coverage of each material as a proportion of that Zone.

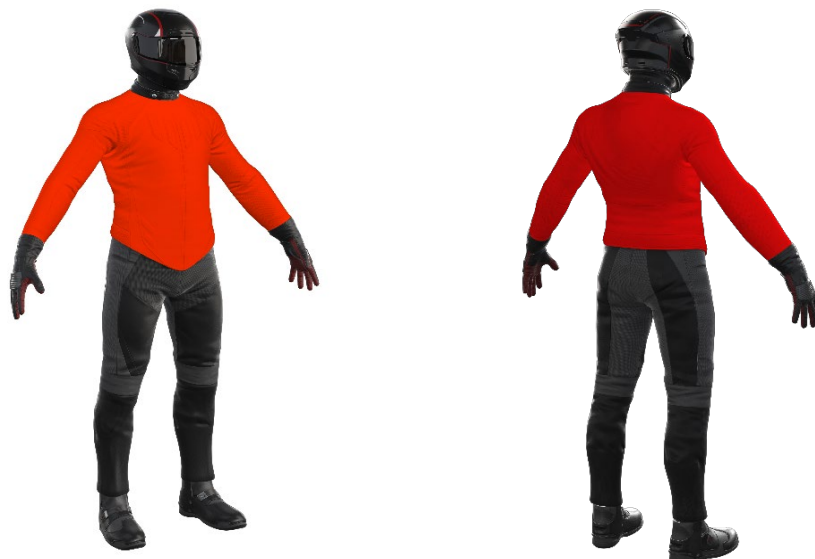
Details of materials used in garment:

Material A: High density woven fabric shell, foam filler and mesh inner liner
 Material B: Woven fabric shell and mesh inner liner
 Material C: Mesh fabric shell and mesh inner liner

Zone	Coverage (%)	Abrasion time for each test (seconds)						Average (seconds)	
		1	2	3	4	5	6		
Zone 1 and 2 areas (High abrasion risk)									
Material A	90%	1.63	5.17	1.84	1.75	2.13		2.50	M
Material B	10%	0.21	0.33	0.30	0.20	0.23	0.20	0.25	P
Zone 3 area (Medium abrasion risk)									
Material B	15%	0.21	0.33	0.30	0.20	0.23	0.20	0.25	P
Material C	85%	0.22	0.20	0.18	0.16	0.23	0.24	0.21	P
Zone 4 area (Low abrasion risk)									
Material B	20%	0.21	0.33	0.30	0.20	0.23	0.20	0.25	P
Material C	80%	0.22	0.20	0.18	0.16	0.23	0.24	0.21	P

Abrasion times are capped at a maximum of 10.00s.

The diagram below is a visual indication of the likely abrasion performance of the materials in each zone calculated from the data in the table above. The colour coding is based on the worst performing material in each zone.



Determining Criteria		Good	Acceptable	Marginal	Poor
High abrasion risk	Zone 1/2:	> 5.6	3.0 - 5.6	1.3 - 2.9	< 1.3
Medium abrasion risk	Zone 3:	> 2.5	1.8 - 2.5	0.8 - 1.7	< 0.8
Low abrasion risk	Zone 4:	> 1.5	1.0 - 1.5	0.4 - 0.9	< 0.4

Burst Strength

The garment's burst strength was tested in accordance with MotoCAP test protocols. The table below shows the burst pressure in kilopascals (kPA) for each sample tested by Zone and the average result for each zone.

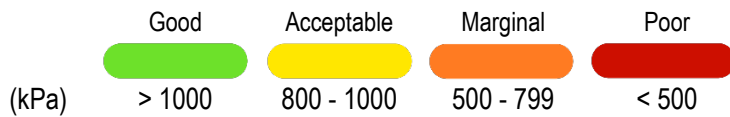
Burst pressure (kPA)

Area	1	2	3	4	5	Average	
Zones 1 & 2	1950	1940	1956	1948	1866	1932	G
Zone EZ	1441	1074	1036	1623	1021	1239	G
Zones 3 & 4	1447	1015	1380	760	519	1025	G

The diagram below illustrates the burst strength results in terms of the likely performance of the garment in an impact and is a pictorial representation of the data from the table above.



Determining Criteria
Burst strength



Impact Protection

The garment was tested for impact protection and coverage in accordance with MotoCAP test protocols. The table below shows the test results for each strike on each impact protector in kilonewtons (kN) and their area of coverage as a proportion (%) of the Zone.

Impact protector type	Elbow		Shoulder	
Average force (kN)	19.3	A	19.1	A
Maximum force (kN)	20.6	A	19.6	A
Coverage of zone 1 area	110%		95%	
Coverage of zone after displacement	90%		80%	

Individual test results

Impact force (kN)	Elbow			Shoulder		
	A	B	C	A	B	C
Impact Protector 1	18.8	19.7	19.7	18.7	19.5	18.1
Impact Protector 2	20.2	20.6	18.3	18.6	19.0	19.4
Impact Protector 3	17.4	19.5	19.4	19.5	19.6	19.3

The diagram below is a visual indication of the likely performance of each impact protector calculated from the data in the table above. The colour coding is based on the worst performing score for average or maximum force for each impact zone.



Determining Criteria	Good	Acceptable	Marginal	Poor*
Impact force (kN)	< 15	15 - 24	25 - 30	> 30

* Poor may also indicate that no impact protector, or impact protector pocket is present in the garment

Areas shaded black are not considered in the impact protection ratings.

Thermal comfort

The garment was tested for thermal comfort following the MotoCAP test protocols. The table below shows the moisture vapour resistance and the thermal resistance values obtained.

	1	2	Average
Moisture Vapour Resistance - R_{et} (kPam ² /W)	31.3	29.7	30.5
	1	2	Average
Thermal Resistance - R_{ct} (Km ² /W)	0.169	0.165	0.167

Water spray and rain resistance

These garments had waterproof swing-tags however no water resistant barrier was present so they were not tested for water spray and rain resistance.