


This MotoCAP safety rating applies to:

Brand: DriRider
Model: Climate Control Pro 4
Type: Jacket - Textile
Date purchased: 9 August 2019
Sizes tested: L and XL
Gender: M
Style: Tourer
Test code: J19T19

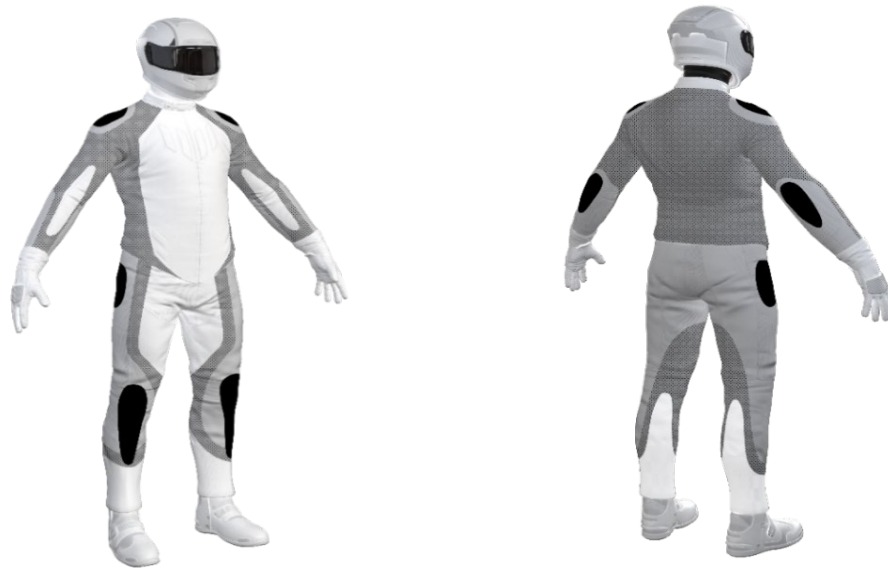
Test Results Summary:

	Rating	Score
MotoCAP Protection Rating	★	24.5
Abrasion	1/10	0.52
Burst	10/10	1393
Impact	4/10	26.4
MotoCAP Comfort Rating	★★	0.332
Moisture Vapour Resistance		38.2
Thermal Resistance		0.211
Water resistance	1/10	62

This garment is fitted with impact protectors for the elbows and shoulders. A pocket is provided at the back for an aftermarket impact protector. Permanent ventilation is provided by mesh panels in the arms, chest and back to allow airflow movement through the garment. This garment was also tested with the water-resistant liner installed, which reduced the comfort score but it remained in the 2 star rating category.

Jacket and Pants - Crash Impact Risk Zones

This diagram is a pictorial representation of the crash impact risk Zones.


Zone 1


High risk of abrasion
High risk of impact

Zone 2


High risk of abrasion

Zone 3


Medium risk of abrasion

Zone 4


Low risk of abrasion

Abrasion Resistance

The garment was tested for abrasion resistance in accordance with MotoCAP test protocols. The table below shows the test results for time to abrade through all layers of the materials. Calculated for each sample by Zone, type and area coverage of each material as a proportion of that Zone.

Details of materials used in garment:

Material A:	Woven fabric shell with mesh inner liner
Material B:	Stretch fabric shell with mesh inner liner
Material C:	Mesh fabric shell with mesh inner liner

Zone	Coverage (%)	Abrasion time for each test (seconds)						Average (seconds)	
		1	2	3	4	5	6		
Zone 1 and 2 areas (High abrasion risk)									
Material A	100%	0.57	0.76	0.56	0.41	0.74	0.45	0.58	P
Zone 3 area (Medium abrasion risk)									
Material B	20%	1.18	1.67	1.66	1.56			1.52	M
Material C	80%	0.25	0.28	0.16	0.19	0.18	0.29	0.22	P
Zone 4 area (Low abrasion risk)									
Material A	40%	0.57	0.76	0.56	0.41	0.74	0.45	0.58	M
Material C	60%	0.25	0.28	0.16	0.19	0.18	0.29	0.22	P

Abrasion times are capped at a maximum of 10.00s.

The diagram below is a visual indication of the likely abrasion performance of the materials in each zone calculated from the data in the table above. The colour coding is based on the worst performing material in each zone.



Determining Criteria		Good	Acceptable	Marginal	Poor
High abrasion risk	Zone 1/2:	> 5.6	3.0 - 5.6	1.3 - 2.9	< 1.3
Medium abrasion risk	Zone 3:	> 2.5	1.8 - 2.5	0.8 - 1.7	< 0.8
Low abrasion risk	Zone 4:	> 1.5	1.0 - 1.5	0.4 - 0.9	< 0.4

Burst Strength

The garment's burst strength was tested in accordance with MotoCAP test protocols. The table below shows the burst pressure in kilopascals (kPa) for each sample tested by Zone and the average result for each zone.

Burst pressure (kPa)

Area	1	2	3	4	5	Average	
Zones 1 & 2	1708	1616	1586	1613	1736	1652	G
Zone EZ	1234	1382	1469	1317	1329	1346	G
Zones 3 & 4	991	633	1235	959	1032	970	A

The diagram below illustrates the burst strength results in terms of the likely performance of the garment in an impact and is a pictorial representation of the data from the table above.



Impact Protection

The garment was tested for impact protection and coverage in accordance with MotoCAP test protocols. The table below shows the test results for each strike on each impact protector in kilonewtons (kN) and their area of coverage as a proportion (%) of the Zone.

Impact protector type	Elbow		Shoulder	
Average force (kN)	18.2	A	24.9	M
Maximum force (kN)	23.2	A	36.4	P
Coverage of zone 1 area	100%		105%	
Coverage of zone after displacement	80%		100%	

Individual test results

Impact force (kN)	Elbow			Shoulder		
	A	B	C	A	B	C
Impact Protector 1	15.4	23.2	18.8	19.1	20.6	23.0
Impact Protector 2	15.1	19.0	19.9	27.0	23.9	36.4
Impact Protector 3	15.2	19.2	17.7	17.1	31.8	25.0

The diagram below is a visual indication of the likely performance of each impact protector calculated from the data in the table above. The colour coding is based on the worst performing score for average or maximum force for each impact zone.



Determining Criteria	Impact force (kN)			
	Good	Acceptable	Marginal	Poor*
Impact force (kN)	< 15	15 - 24	25 - 30	> 30

* Poor may also indicate that no impact protector, or impact protector pocket is present in the garment

Areas shaded black are not considered in the impact protection ratings.

Thermal comfort

The garment was tested for thermal comfort following the MotoCAP test protocols. The table below shows the moisture vapour resistance and the thermal resistance values obtained.

	1	2	Average
Moisture Vapour Resistance - R_{et} (kPam ² /W)	37.0	39.3	38.2
	1	2	Average
Thermal Resistance - R_{ct} (Km ² /W)	0.215	0.207	0.211

Water spray and rain resistance

This garment is advertised as water-resistant, and so has been tested for water spray and rain resistance according to the MotoCAP test protocols. The table below shows the increased weight (g) and proportion (%) of the garment and undergarments due to water absorption.

	Water absorbed by garment		Water absorbed by underwear	
	Volume (ml)	Percentage (%)	Volume (ml)	Percentage (%)
Garment 1	685	44%	226	81%
Garment 2	741	47%	115	42%
Average	475	45%	114	62%

Location of wetting:

Visible wetting to the cotton underwear worn under the motorcycle water resistant garment was present on the neck and chest of both garments tested.